

Clients\Doers PERMANENT\Florida Product Approvals\FL-16854 Windows - Single Hung\Windows - Single Hung\C - Drawings\FL-16854 (2014)\FL-16854.7-14.dwg, FL-16854.9



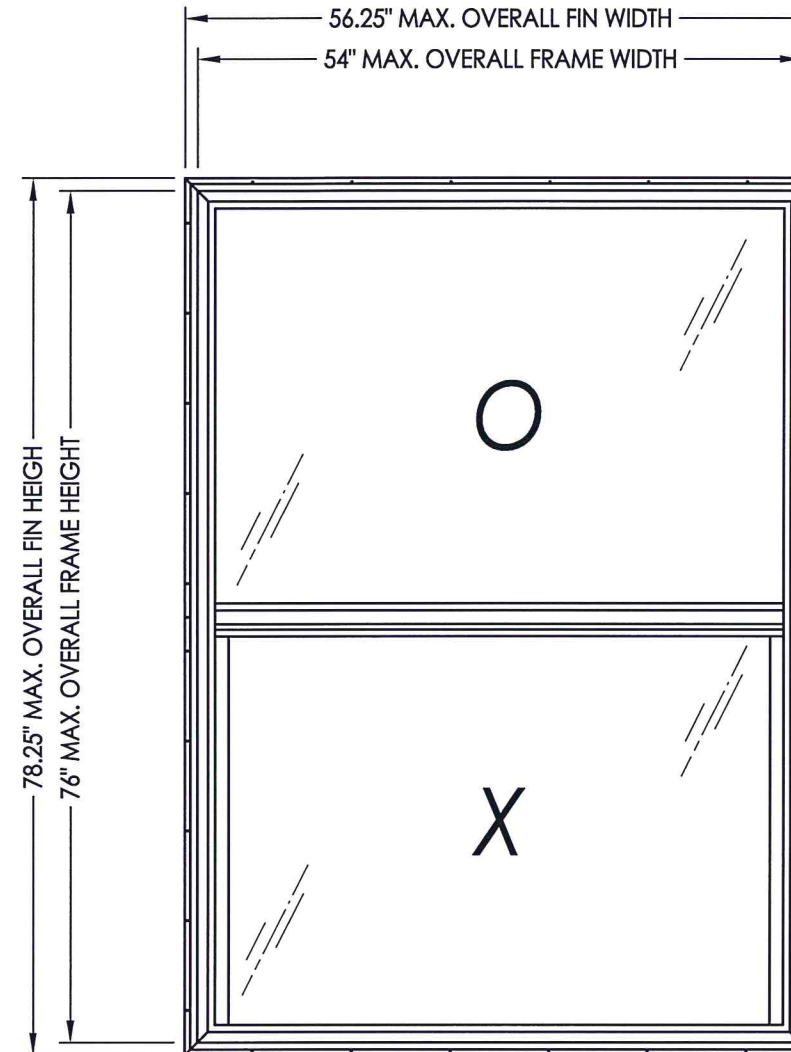
4450 Single Hung Window

IMPACT RATED w/ Nailing Fin

GENERAL NOTES

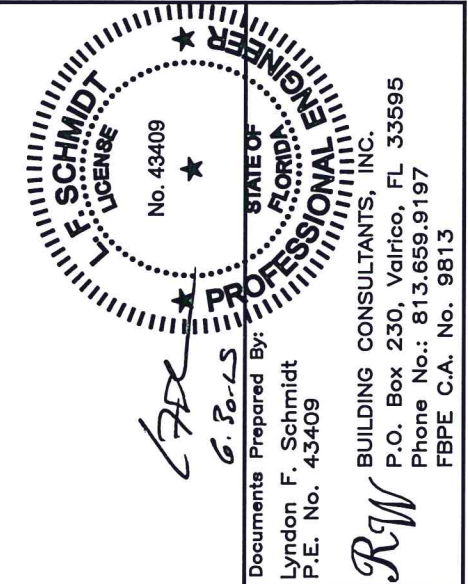
1. This product anchoring drawing has been evaluated and is in compliance with the 5th Edition (2014) Florida Building Code (FBC) excluding the "High Velocity Hurricane Zone" (HVHZ). See the Certification Agency Certificate for sizes, specifications & ratings.
2. Product anchors shall be as listed and spaced as shown on details. Anchor embedment to base material shall be beyond wall dressing or stucco.
3. When used in areas requiring wind borne debris protection, this product complies with Section 1609.1.2 of the FBC and does not require an impact resistant covering. This product meets missile level "D" and includes Wind Zone 4 as defined in ASTM E 1996 and Section 1609.1.2.2 of the FBC.
4. Site conditions that deviate from the details of this drawing require further engineering analysis by a licensed engineer or registered architect.

TABLE OF CONTENTS	
SHEET#	DESCRIPTION
1	Typical elevations, design pressures & general notes
2	Vertical & horizontal cross sections
3	Vertical & horizontal cross sections
4	Buck & frame anchoring
5	Bill of materials, components and glazing detail



MAX. O.A. FIN DIMENSION	MAX. O.A. FRAME DIMENSION	MAX. SASH D.L.O. DIMENSION	MAX. FIXED D.L.O. DIMENSION	GLASS TYPE	DESIGN PRESSURE (PSF)	
					POSITIVE	NEGATIVE
56.25" x 78.25"	54" X 76"	48.25" X 33.5"	50.75" X 35.5"	G1	+40.0	-40.0
39.25" x 64.25"	37" X 62"	31.25" X 26.5"	33.75" X 28.5"	G1	+40.0	-55.0
39.25" x 64.25"	37" X 62"	31.25" X 26.5"	33.75" X 28.5"	G1	+55.0*	-55.0
43.25" x 61.75"	41" X 59.5"	35.25" X 27.5"	37.75" X 25.25"	G2	+60.0*	-65.0

*Requires sill riser



PRODUCT: SINGLE HUNG WINDOW
PART OR ASSEMBLY: TYPICAL ELEVATION, DESIGN PRESSURES & GENERAL NOTES

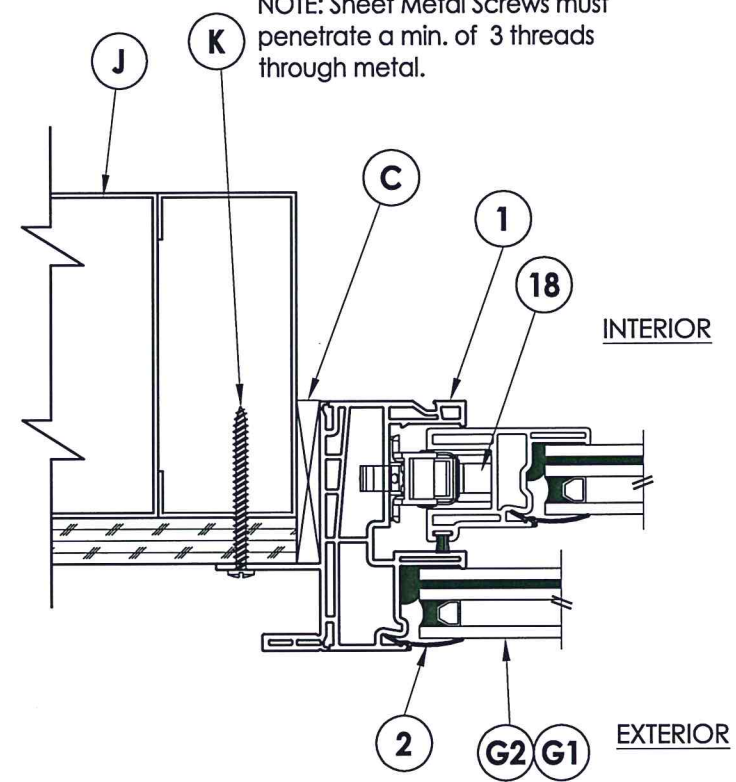
NO.	DATE	BY	REVISIONS

DATE: 6/26/15
SCALE: N.T.S.
DWG. BY: JK
CHK. BY: LFS
DRAWING NO.: FL-16854.9
SHEET 1 OF 5

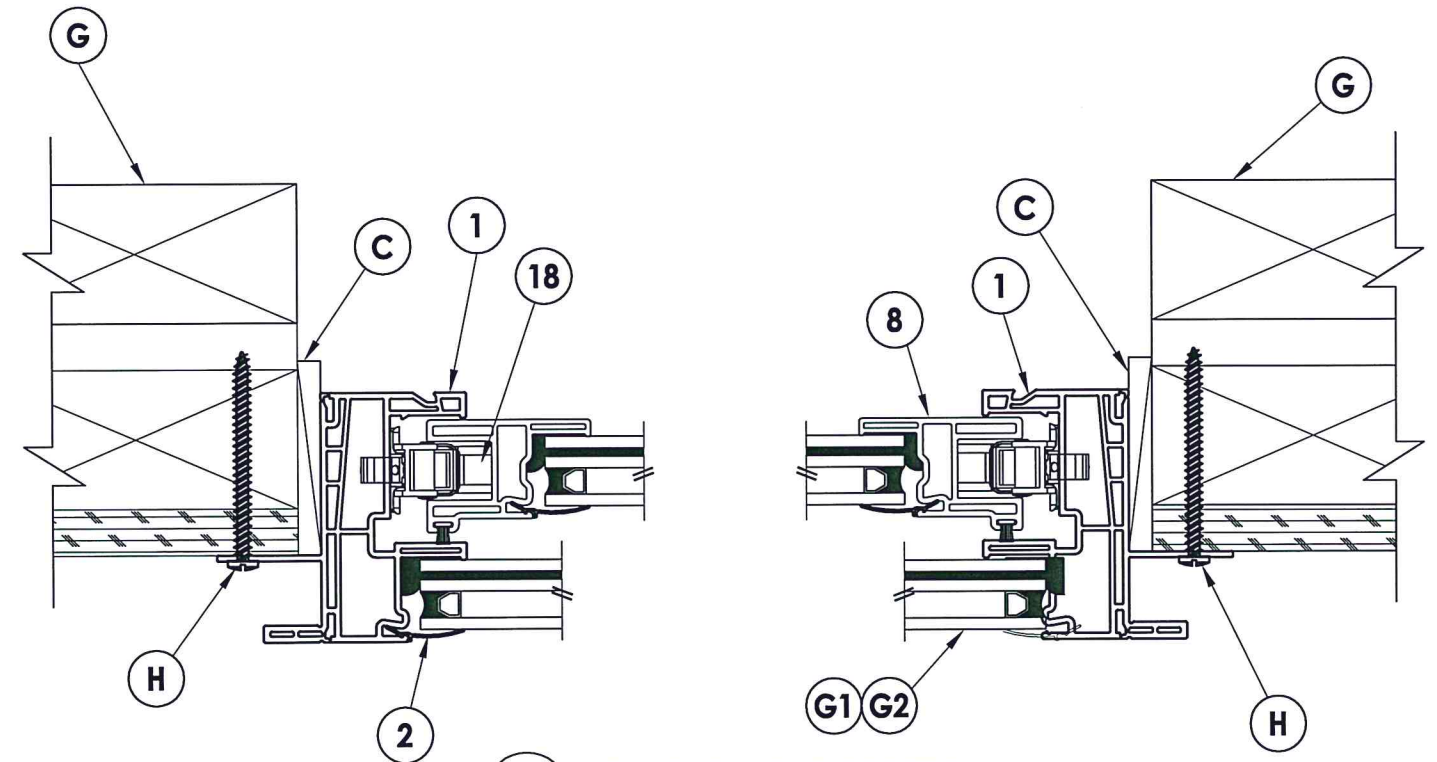
Clients\Doers PERMANENT\Florida Product Approvals\FL-16854 Windows - Single Hung\C - Drawings\FL-16854.7-14.dwg, 3.2

- NOTES:
- Sill interlock clip location(s):
 For units $\leq 37"$ width - 1 required @ centerline of sill.
 For units $> 37"$ width - 2 required at 1/3 pts. along sill.
 - Sill riser required when positive design pressure > 40 psf.
 - Lock and keeper located 12" from each end of frame jamb.

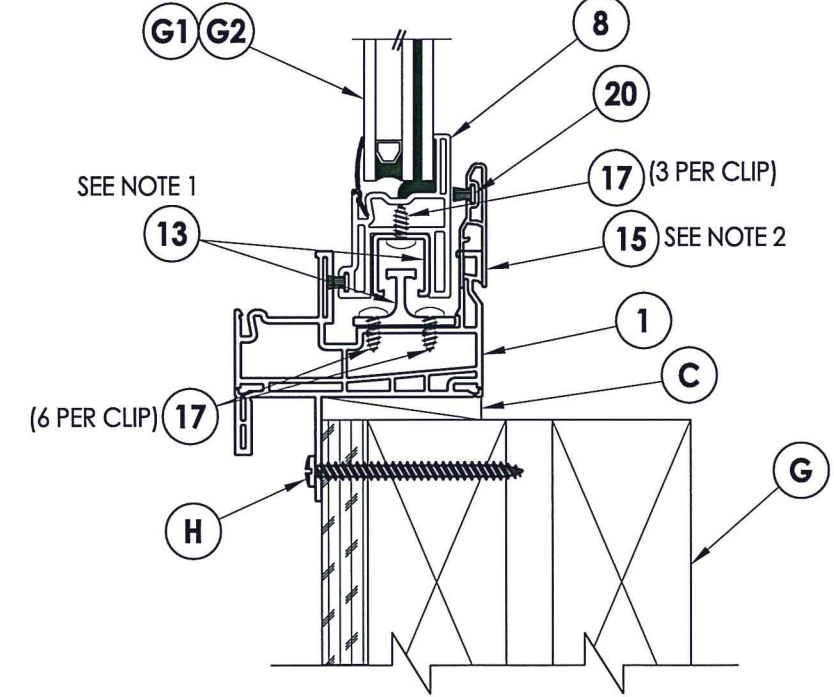
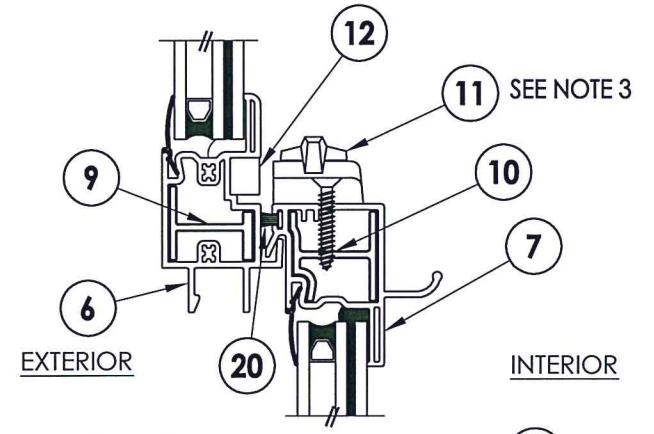
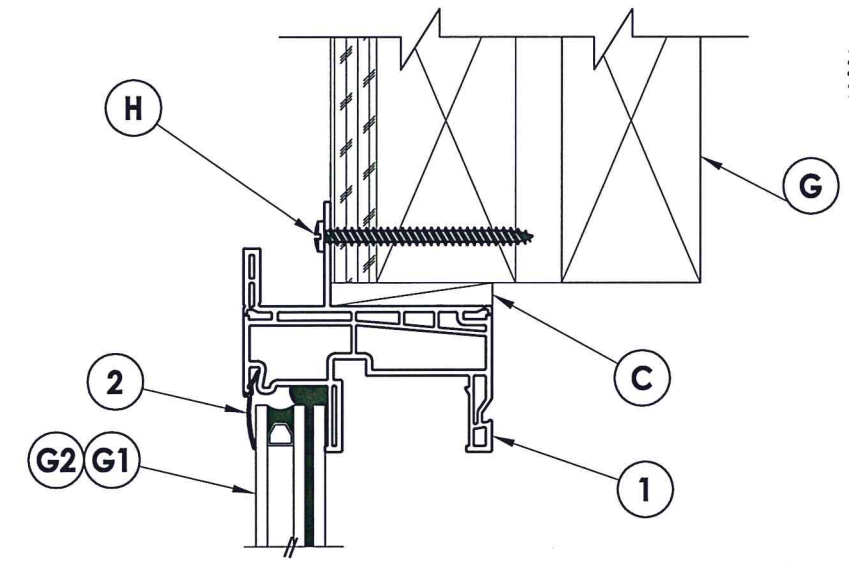
NOTE: Sheet Metal Screws must penetrate a min. of 3 threads through metal.



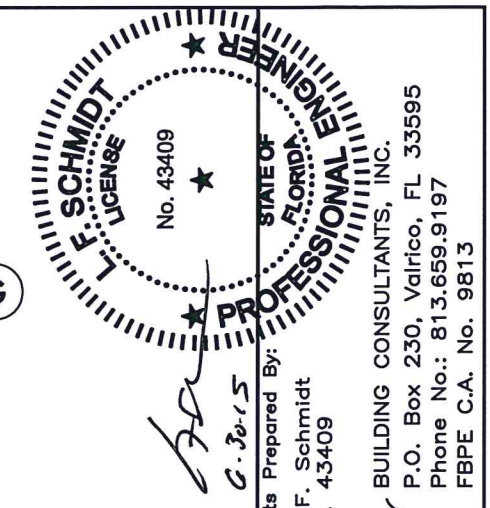
3 HORIZONTAL CROSS SECTION
 3 Shown w/ Steel Stud Framing Option



1 HORIZONTAL CROSS SECTION
 3 Stud Construction



2 VERTICAL CROSS SECTION
 3 Stud Construction



Documents Prepared By:
 Lyndon F. Schmidt
 P.E. No. 43409

RW BUILDING CONSULTANTS, INC.
 P.O. Box 230, Valrico, FL 33595
 Phone No.: 813.659.9197
 FBPE C.A. No. 9813

PRODUCT: SINGLE HUNG WINDOW

PART OR ASSEMBLY: VERTICAL & HORIZONTAL CROSS SECTIONS

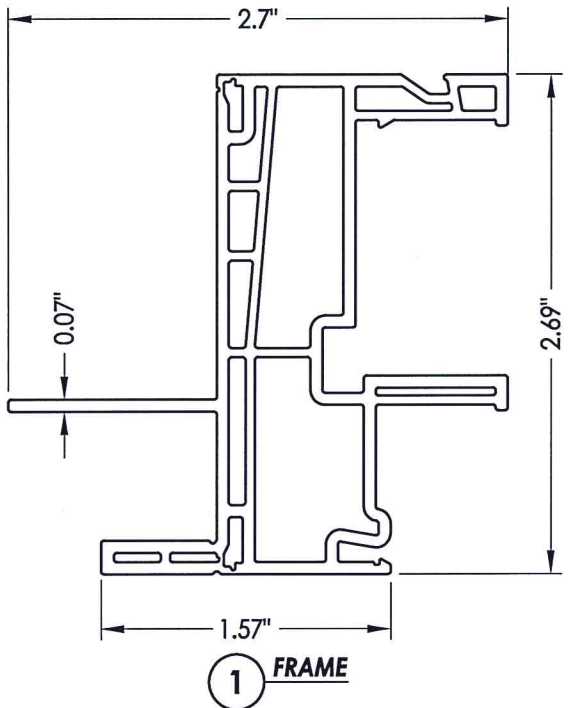
NO.	DATE	BY	REVISIONS

DATE: 6/26/15
 SCALE: N.T.S.
 DWG. BY: JK
 CHK. BY: LFS
 DRAWING NO.: FL-16854.9
 SHEET 3 OF 5

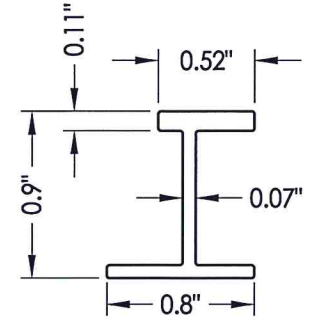
Clients\Doers PERMANENT\Florida Product Approvals\FL-16854 Windows - Single Hung\C - Drawings\FL-16854 (2014)\FL-16854.7-14.dwg. 5.2

BILL OF MATERIALS		
ITEM #	DESCRIPTION	MATERIAL
B	2X BUCK (SG >= 0.55)	WOOD
C	1/4" MAX. SHIM SPACE	-
D	1/4" X 2-3/4" PFH ELCO OR ITW CONCRETE SCREW	STEEL
E	MASONRY - 3,000 PSI MIN. CONCRETE CONFORMING TO ACI 301 OR HOLLOW BLOCK CONFORMING TO ASTM C90	CONCRETE
F	#8 X 1-1/4" PPH SMS (1-1/8" MIN. EMBEDMENT)	STEEL
G	2X STUD (SG >= 0.55)	WOOD
H	#8 X 1-3/4" PPH SMS (1-1/8" MIN. EMBEDMENT)	STEEL
J	STEEL STUD Min. Thk .033" (ASTM A653 GRADE 33 Fy=33 ksi min., Fu=45 ksi min.)	STEEL
K	#10 PPH SELF-DRILLING SMS	STEEL
1	EXTRUDED VINYL FRAME *	RIGID PVC
2	EXTRUDED VINYL GLAZING BEAD *	RIGID PVC
3	GLASS SETTING BLOCK	-
4	GLAZING SPACER (Duraseal)	-
5	GLAZING SEALANT (Sikaflex-552)	SILICONE
6	MEETING RAIL*	RIGID PVC
7	LOCK RAIL*	RIGID PVC
8	STILE/RAIL*	RIGID PVC
9	MEETING RAIL REINFORCEMENT	ALUM
10	LOCK RAIL REINFORCEMENT	ALUM
11	SASH LOCK	-
12	KEEPER	-
13	INTERLOCK CLIP	ALUM
14	ROLLER	-
15	SILL RISER*	RIGID PVC
16	ROLLER TRACK*	RIGID PVC
17	#6 X 3/8" PPH SMS	STEEL
18	WINDOW BALANCE	-
20	WEATHERSTRIP (.187" X .290")	-

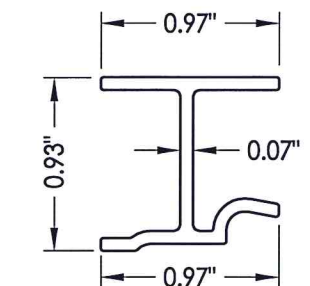
* THE APPROVED WHITE RIGID PVC EXTERIOR EXTRUSIONS FOR WINDOWS ARE TO BE PRODUCED BY EXTRUDERS LICENSEES IN "AAMA CERTIFICATION PROGRAMS FOR RIGID PVC EXTRUSIONS".



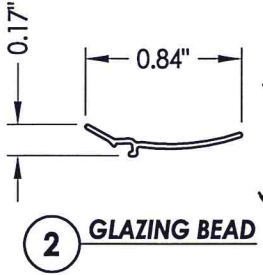
1 FRAME



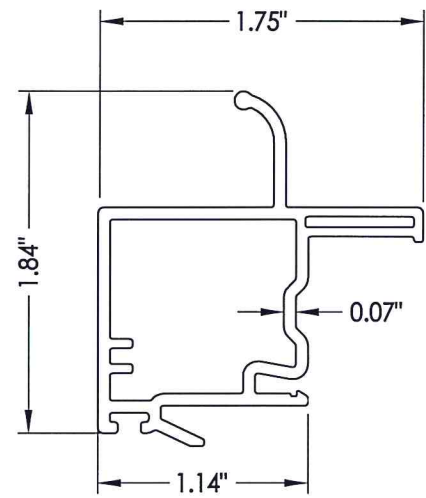
9 REINFORCEMENT Meeting Rail



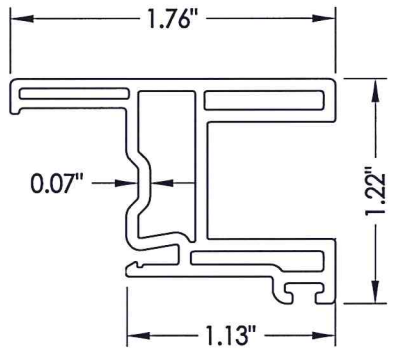
10 REINFORCEMENT Lock Rail



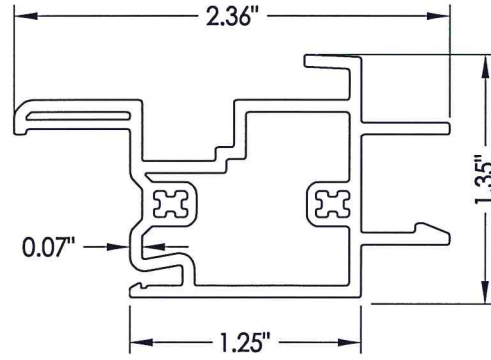
2 GLAZING BEAD



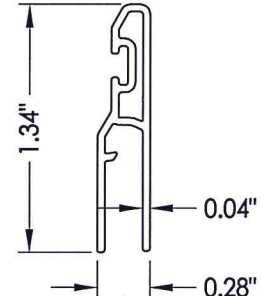
7 LOCK RAIL



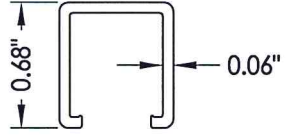
8 STILE/RAIL



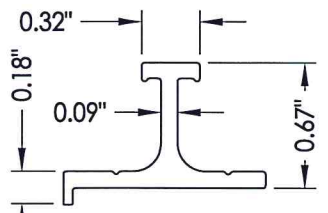
6 MEETING RAIL



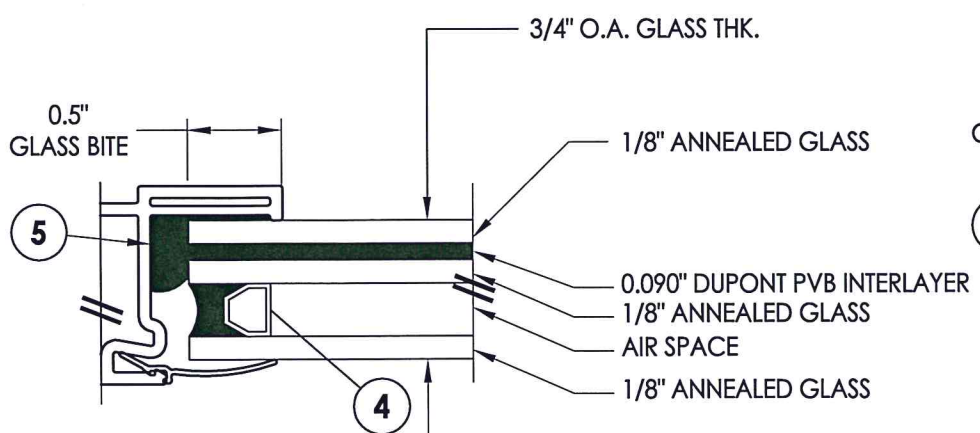
15 SILL RISER



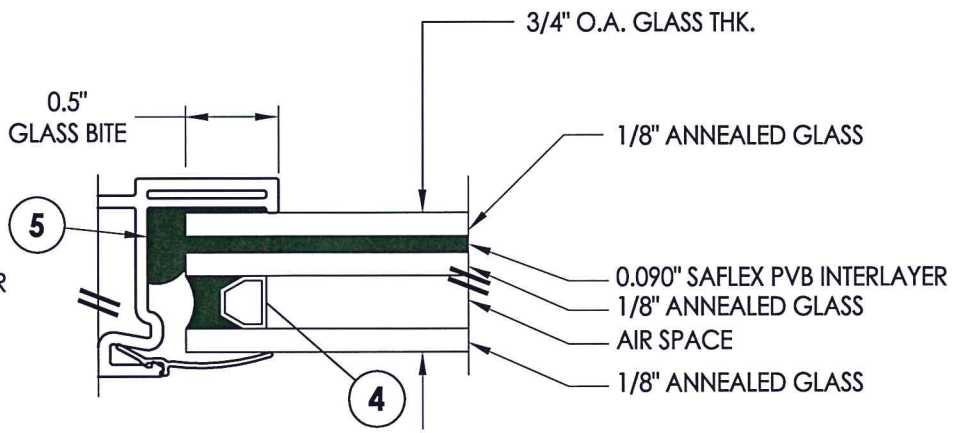
13 SILL INTERLOCK CLIP Sash (3"Long)



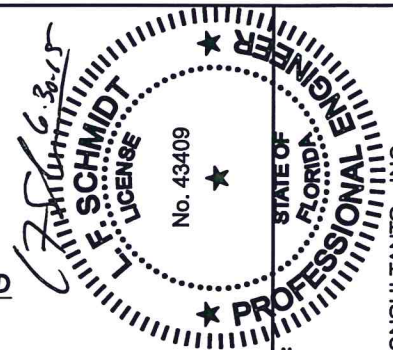
13 SILL INTERLOCK CLIP Sill (3"Long)



G1 GLAZING DETAIL



G2 GLAZING DETAIL



Documents Prepared By:
Lyndon F. Schmidt
P.E. No. 43409

RW BUILDING CONSULTANTS, INC.
P.O. Box 230, Valrico, FL 33595
Phone No.: 813.659.9197
FBPE C.A. No. 9813

PRODUCT: SINGLE HUNG WINDOW
PART OR ASSEMBLY: BILL OF MATERIALS, COMPONENTS AND GLAZING DETAIL

NO.	DATE	BY

DATE: 6/26/15
SCALE: N.T.S.
DWG. BY: JK
CHK. BY: LFS
DRAWING NO.: FL-16854.9
SHEET 5 OF 5